

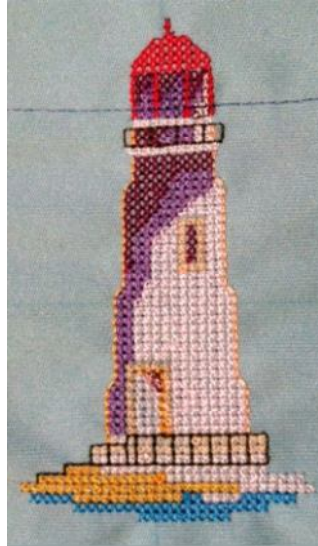
Weatherproof Tote

Materials:

18" x 34" PUL
1 1/2 yds 1" poly webbing
Embroidery design

Additional Notions:

Embroidery thread
Teflon/non-stick foot
Zipper foot
Topstitch needle
Heat sealing tool
Embroidery target sticker
Polymesh stabilizer
Glue Stick



We suggest a light weight/low stitch count cross stitch design like this lighthouse design for beautiful results.

Working with PUL: Sewing PUL is straight forward, but if you find it sticking to the bed of your machine or your foot, then try using a non-stick bed cover (such as a Supreme Slider) and a non-stick foot (Teflon stickers for the bottom of feet are available as well as non-stick feet for many brands).

When sewing close to a fold through thicknesses, a zipper foot and increased presser foot pressure will hold the fold tight/flat and allow you to sew closer to the edge without dropping stitches. A Topstitch needle will flex less and give better results.

Wayside Patterns



Totes offer a great way to save the world by reducing our use of plastic bags. Make your bag stand out by adding a beautiful embroidery and use weather-proof fabric for a for durability and reliability.

Weatherproof

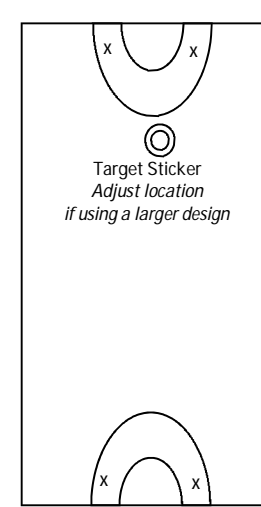
Tote



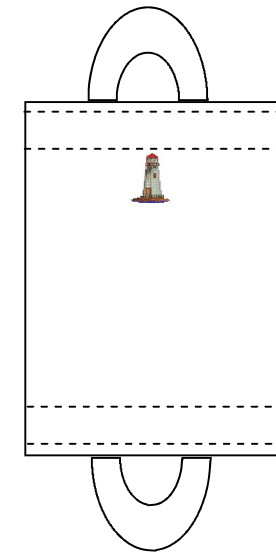
©Copyright 2013
Wayside Sewing LLC
1021 Boston Post Rd E
Marlborough, MA 01752 - (508)481-2088

Directions:

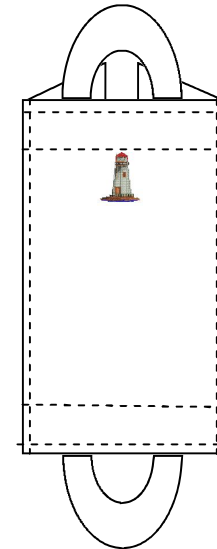
1. Measure 9" over and 7" down from one short edge of your tote bag fabric and place a mark or target sticker on this location.
2. Hoop a piece of polymesh stabilizer. Use a glue stick to add adhesive to the stabilizer, and place the tote bag fabric on the stabilizer with the target sticker centered in the middle of the hoop.
3. Load a cross stitch design and embroider the design centered on the target sticker.
4. Take the fabric from the hoop and trim the excess stabilizer.
5. Mark the handle placements on the short edges; measure 5" in from the edge, on both sides & both ends. See "x" in marking diagram.
6. Cut the strapping in half and heat seal the cut ends for the handles.
7. Place the handles on the marks, aligning raw edges with the raw edge of the fabric. Stitch the handles to the fabrics by sewing a 2" square with a large "X" in the middle for reinforcement.
8. Mark a line 3" from the edge on both short sides. Fold on this line (towards the inside) and topstitch close to the fold, catching the handles. Sew along the raw edge, to finish and reinforce the hem.
9. Fold 2" of fabric, wrong sides together, along the long edges and topstitch close to the fold. These lines give the bag shape and structure.
10. Fold the bag in half **WRONG** sides together, aligning top edges, and sew a 1/4" side seam. Turn bag inside out, roll side seams flat. Stitch the side seams with a 1/2" seam, encasing seam allowance, for a finished interior French seam on both sides.
11. Box the bottom using the top stitching from step 9 to mark the corners. *Measure and cut up to the top stitched edges of the side seam and box bottom so the side topstitching now finishes the bottom edge, stitch in the ditch formed by the side casing for a professional finish.*



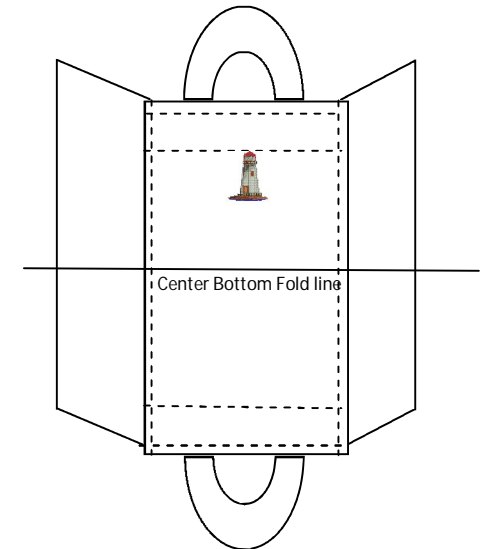
Marking Diagram



Step 8



Step 9



Box Bottom: With bag right sides together measure and remove a ~1 1/2" square from the bottom corners of the bag, the distance from the side topstitching to the side seam. Pull the fabric so the center bottom aligns with the side seam and the cut edges match up. Sew across the cut edge along the side topstitch. Do both sides..

